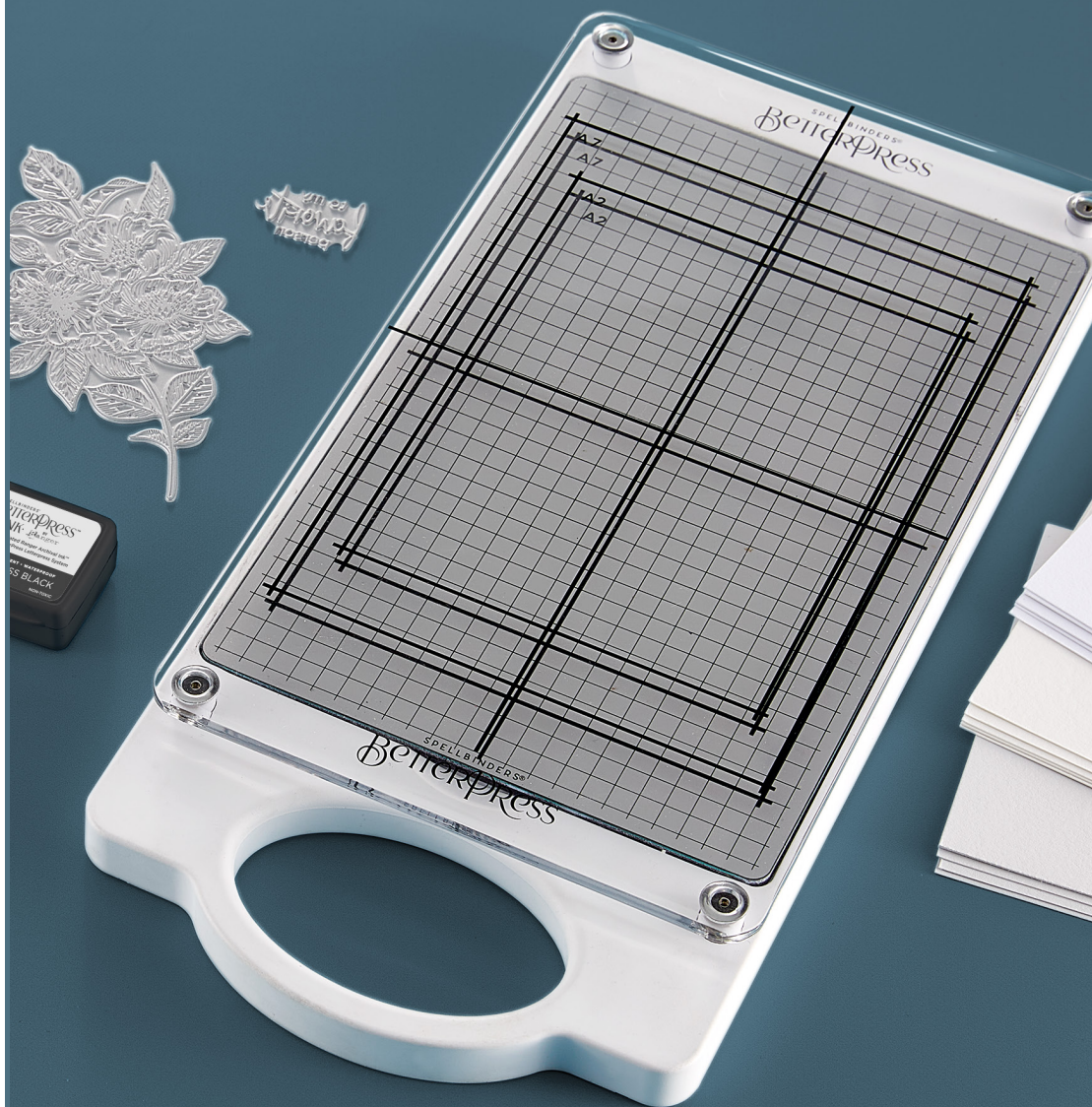


SPELLBINDERS®  
**BETTERPRESS™**  
— LETTERPRESS SYSTEM —



**OPERATING INSTRUCTIONS**

Letterpress Made **BETTER**

**Change the way you create with BetterPress,  
an innovative and easy way to achieve the elegant look  
of letterpress without all the mess.**

Thoughtfully designed and carefully curated, the BetterPress system works with your manual die cutting machine to create beautiful, effortless, and detailed letterpress effects. We worked in collaboration with Ranger to create a specially formulated archival waterproof ink to ensure that each piece is timeless and lasting, and carefully selected the highest quality cardstock for deep, luxurious impressions.

Allow your creativity to flourish when you combine BetterPress with the Glimmer Hot Foil System and the extensive library of Spellbinders dies to create one-of-a-kind cards, stationery, projects and more.

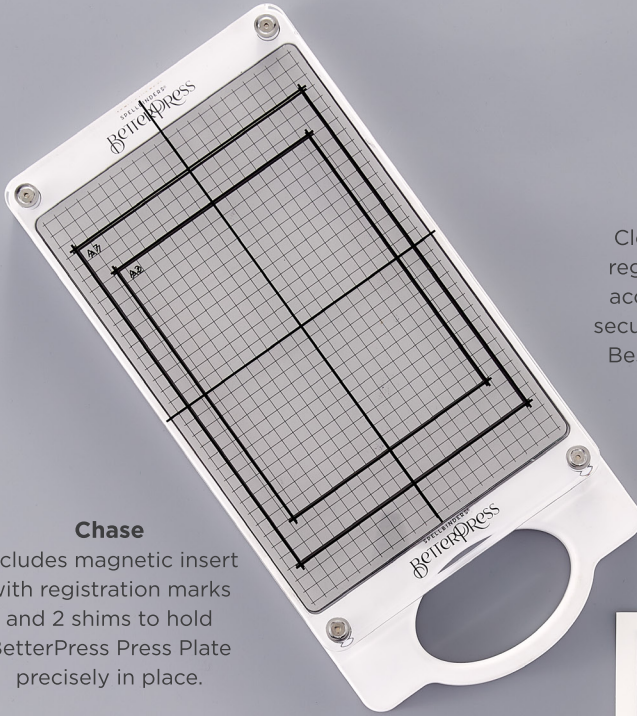
**Letterpress Made**  **BETTER**

---

**i** PLEASE READ ALL THE INSTRUCTIONS IN THIS MANUAL  
BEFORE USING YOUR SPELLBINDERS® BETTERPRESS  
LETTERPRESS SYSTEM.

---

## CONTENTS



### Chase

Includes magnetic insert with registration marks and 2 shims to hold BetterPress Press Plate precisely in place.

### BetterPress Press Plates

Designs that will be inked and pressed against BetterPress Card Panel to create a letterpress design.



### BetterPress Ink

Custom formulated Ranger Archival™ waterproof ink used to ink BetterPress Press Plate for letterpress printing.



### Best Ever Craft Tape

Extra thin removeable tape, with no gummy residue. Use to tape card panels to Platen.

### Platen

Clear top plate with registration marks to accurately place and secure card panels with Best Ever Craft Tape.



### BetterPress Cotton Card Panels

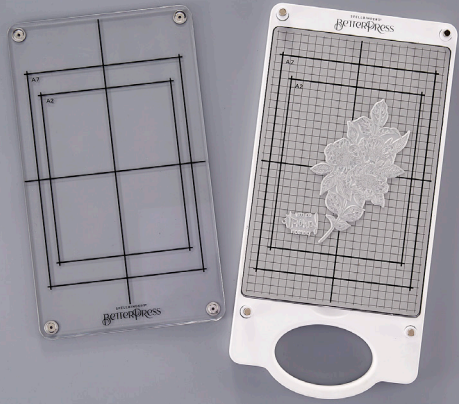
Cotton-based cardstock specifically tested to create ideal letterpress images.



## HOW TO BETTERPRESS

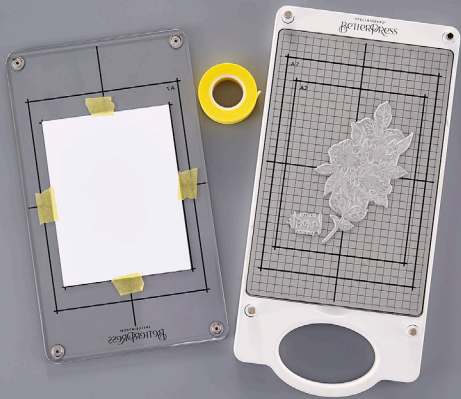
1

Place 2 Shims on base of Chase and layer magnet insert over Shims. Place BetterPress Press Plate on Chase (the magnet insert will keep the press plate from moving); use registration lines to determine correct placement.



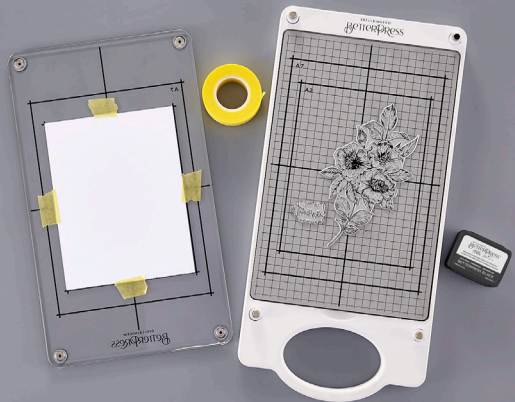
2

Place card panel on underside of Platen and use Best Ever Craft Tape to secure in place. The registration marks on the Platen match the marks on the Chase.

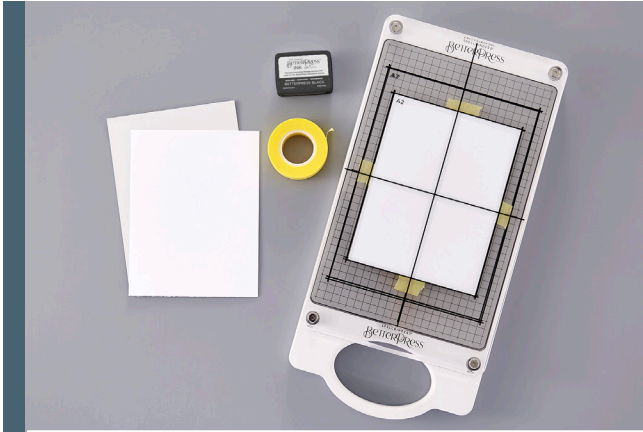


3

Open BetterPress Ink pad; lightly tap raised ink pad across the BetterPress Press Plate. The ink pad is raised enough that a brayer is not needed. Note: make sure to use a well inked pad; reink pads when necessary with BetterPress Ink Re-Inkers.

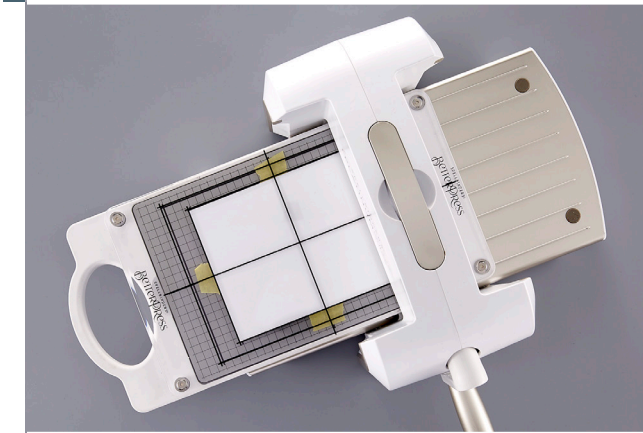


## HOW TO BETTERPRESS (cont.)



4

Align Platen to gently sit on the 4 corner spring pins on the Chase. Do not press down.



5

Place Chase with Platen onto manual die cutting machine. The machine rollers will evenly press down on Platen as the Chase is run through the machine.



6

Carefully remove Platen and the BetterPress letterpress design will be revealed! Carefully remove card panel from Platen. If repeating the same design, reink and repeat.

## OTHER INFORMATION, TIPS AND TECHNIQUES

---

- BetterPress Press Plates are manufactured differently from etched cutting dies or Glimmer hot foil plates and are NOT interchangeable.
- Clean BetterPress Press Plates with Ranger's Archival Ink Cleaner. Make sure the press plate is clean and dry before reinking to use again. **NOTE:** The Chase magnetic insert will get ink on it, but it can also be cleaned with Archival Ink Cleaner. Over time, the magnetic insert may stain, but dry ink will not transfer onto card panels.
- If using heavier weight cardstock or matboard, remove shims.
- BetterPress without Ink: create an impressed design into a BetterPress Cotton Card Panel without ink by following the steps listed above but skip the ink. This is also known as blind letterpress. Make sure that the BetterPress Press Plate is clean of ink so it will transfer a clean impression onto the card panel.

**To learn more about Spellbinders® BetterPress™ Letterpress System, go to [www.SpellbindersPaperArts.com/BetterPress](http://www.SpellbindersPaperArts.com/BetterPress).**

### WARNINGS

---

KEEP AWAY FROM CHILDREN

CLOSE SUPERVISION IS REQUIRED  
WHEN MACHINE IS USED BY OR NEAR  
CHILDREN

CAUTION: DO NOT USE OUTDOORS OR  
NEAR WATER

CAUTION: ONLY USE ON A STURDY,  
CLEAN, DRY AND FLAT SURFACE

### IMPORTANT

---

DO NOT attempt to repair the product.

DO NOT contact moving parts.

Only use accessories manufactured,  
sold or recommended by Spellbinders®  
Paper Arts.

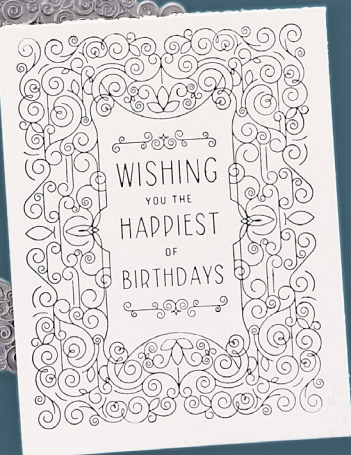
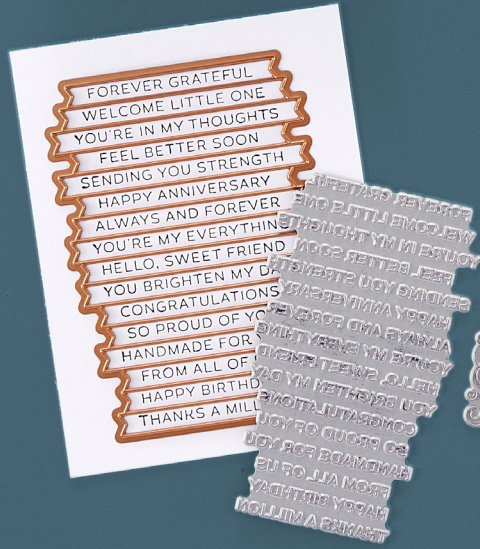
### NOTICE

---

Machine is to be used for its intended  
purpose and not for any other purpose.

SAVE THESE INSTRUCTIONS.





For additional press plates, card panels, inks and reinkers, visit [SpellbindersPaperArts.com](http://SpellbindersPaperArts.com)

Scan code for BetterPress™ Letterpress tips and inspiration.



**SPELLBINDERS®**  
PAPER ARTS

Spellbinders® Paper Arts Company, L.L.C.

Phoenix, Arizona

Toll Free 888-547-0400

Local 602-385-7700

©2022 All Rights Reserved

System and Press Plates Made in China

Tape Made in Japan

Card Panels Made in Italy

Ink Made in USA